



Model No:
DS-3602

Quick Installation Guide

Smart LED Strip



Version 1.40
(English | Indonesian)

Scan me:



1 Package Contents

Starter kit



x1



x1



x1



x1

Extension



x1



x1

Mounting accessories kit



2m Starter kit

x1

x1

x3

x3

5m Starter kit

x1

x1

x6

x6

2m Extension

x1

x1

x3

x3

Note:

- The picture illustrations in this document may differ from actual product.
- If your package does not contain any of the above items, please contact your seller immediately.

2 Overview

LED Strip	Status
Off	Unit is Off
On (White / Colour / Blinking)	Unit is On
Fast Blinking	Unit is in Auto Add / EZ Mode Configuration
Slow Blinking	Unit is in AP Mode Configuration

Activity	Action Required
To reset the LED strip to default setting	Press and Hold the button from Smart Controller
To switch between Auto Add/EZ Mode and AP Mode configurations	

3 Installation

A. Preparation

1. Place the LED strip and Phone within three feet of the router.

Note:

- Make sure the phone is connected to the router through a 2.4GHz wireless network.
- Smart LED strip only operates when connected to 2.4GHz wireless network (support WPA or WPA2 only).

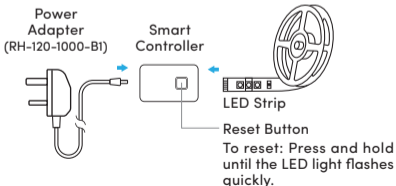
3 Installation

2. Download, install and create an account through the Prolink mEzee app. You can scan the QR code below to download from Google Store or Apple App Store. Alternatively, search for "mEzee".



B. Setting up of LED strip

1. Connect the Smart Controller with the Power Adapter and LED strip as shown below. Ensure that the LED light is in fast blinking mode after turning on the power. Please power on/off 3 times if the LED light is not in fast blinking mode after power on.

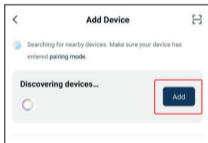


3 Installation

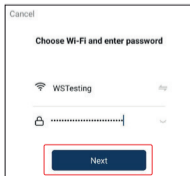
2. Launch the mEzee app and login with your account.
3. Tap **Add Device** or **+** on the top right-hand corner.
4. Use **Method A** to configure using Bluetooth. Otherwise, please use **Method B**.

Method A: Auto Add Configuration

1. Upon tapping **Add Device** or **+** from main screen, the app will start to discover devices.
2. Tap **Add**.

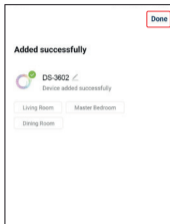
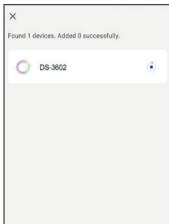


3. Select your **Wi-Fi** name, enter the **Wi-Fi** password, and tap **Next**.



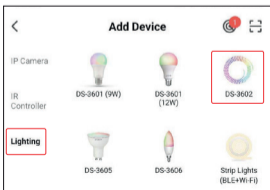
3 Installation

- Once connected, proceed to name this device for easy reference and tap **Done**.



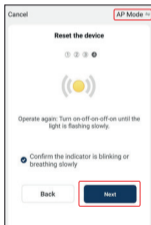
Method B: AP Mode Configuration

- Select **Lighting** and tap **DS-3602**.



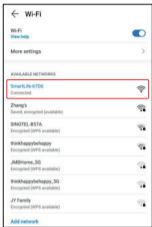
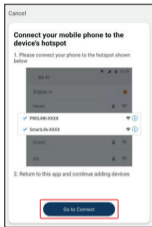
3 Installation

2. Toggle the top right-hand option to **AP Mode** if it shows otherwise.
3. Ensure that the LED strip is blinking slowly. Otherwise, press and hold the button on the Smart Controller until the LED strip started blinking slowly. Alternatively, Power On and Off for 3 consecutive times.
4. Check "**Confirm the indicator is blinking or breathing slowly**" box, and tap **Next**.
5. Select your **Wi-Fi name**, enter the **Wi-Fi password** and tap **Next**.

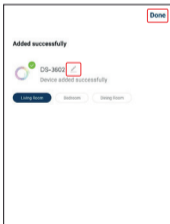


6. Tap **Go to Connect** and connect your mobile phone to PROLiNK-XXXX or SmartLife-XXXX SSID. If you get prompted with "SSID doesn't have Internet access", tap **Connect** and return back to the app.

3 Installation



7. Once connected, proceed to rename this device for easy reference and tap **Done**.



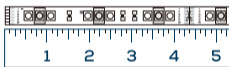
3 Installation

Note:

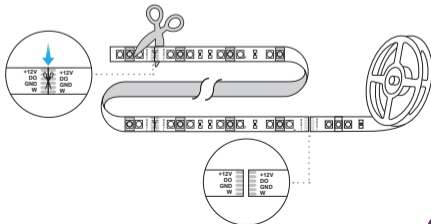
- Please determine the length of LED strip before controlling the features in mEzee app, otherwise you may not be able to achieve the desired features.
- Ensure that the LED strip is working perfectly before installation. Please reach out to the shop that you purchased from if there are any issues.

C. Installation of LED strip

- Measure the area you wish to install the LED strip. Ensure that the area has a clean and solid surface.



- Use a sharp pair of scissors or blade to cut. The LED strip is cuttable at every 10cm (if needed).



3 Installation

3. Gently peel adhesive lining at the back of the LED strip.



4. Position LED strip and press down firmly for at least 30 seconds to ensure a strong hold.

Note:

You will not be able to connect the LED strip to the Smart Controller if you measure & cut from the wrong end.

For Google Assistant / Amazon Alexa users:

Step 1. Complete the steps in this [Quick Installation Guide](#).

Step 2. Setup guide for Google Home and Amazon Alexa are available at <https://prolink2u.com/products/ds-3602>, under downloads tab.



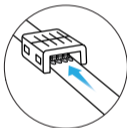
3 Installation

How to extend the light strip length (up to 10m)

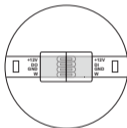
- i) Using a small knife or blade, trim the protective plastic coating around the edge of the strip's end.
- ii) Slide the trimmed end into the extender connector compartment. Follow the attachment lip to ensure that the strip light is connected to the 4-pronged conductor correctly.
- iii) Repeat the above steps for the other end of the light strip and close the connector.



1. Open the LED strip connector and remove about 1cm of PU coating with a small knife or blade

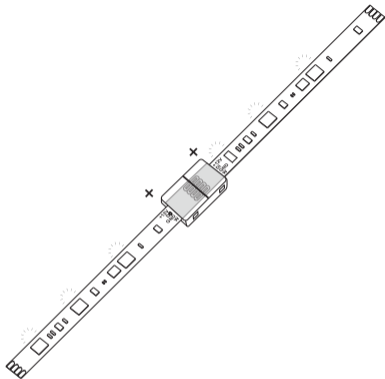


2. Insert the strip underneath the metal tabs



3. Make sure both LED strips are aligned

3 Installation



Note:

If the LED strip is not working, ensure that the 4-pronged conducts are connected correctly with the LED strip's copper area.

4 Frequently Asked Questions

How can I share the LED strip access with family and friends?

Sharing of LED strip access with family and friends can be done using the mEzee app. Tap the “•••” button found on the top right for advanced settings, and tap the “Share Device” button followed by the “Add Sharing” button to grant or revoke sharing permissions.

Note that all users will need to have a registered account on the mEzee app in order to gain access to the LED strip.

How many LED strip can I control?

The mEzee app can control an up to up to 200 smart home devices including cameras for multiple locations. However, your router may have a limitation on the number of devices connected to it.

How do I rename the LED strip?

On the main device list on the mEzee app, tap on the LED strip you wanted to rename and “•••” button found on the top right for advanced settings, and tap “DS-3602” found on the top to edit.

What should I do when my LED strip appears offline or undetected?

Ensure that your Wi-Fi router is working and move your LED strip closer to the it. Subsequently, check that you have the latest firmware version by clicking “Check for firmware update” in your device settings using the mEzee app.

4 Frequently Asked Questions

What should I do if I am unable to connect my LED strip due to the location of my router?

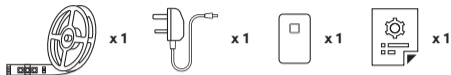
You may consider adding a Prolink Wi-fi Extender to enhance and extend the Wi-fi coverage.

Can I use the LED strip if my Wi-fi/ internet is down?

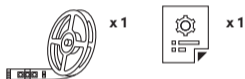
LED strip need to be connected to your home Internet if you want to use them remotely.

1 Isi Kemasan

Paket pemula



Perpanjangan



Pemasangan aksesoris kit



Kit Pemula 2m

x1

x1

x3

x3

Kit Pemula 5m

x1

x1

x6

x6

Perpanjangan
2m

x1

x1

x3

x3

Catatan:

- Gambar ilustrasi dalam dokumen ini mungkin tampak berbeda dari produk yang sebenarnya.
- Jika salah satu item yang disebutkan di atas tidak termasuk dalam paket Anda, silakan segera berkonsultasi dengan reseller Anda.

2 Keterangan

Strip LED	Status
Off	Unit tidak aktif
On (Putih / Warna/ Berkedip)	Unit aktif
Berkedip Cepat	Unit dalam Konfigurasi Auto Add / EZ Mode
Berkedip Lambat	Unit dalam Konfigurasi AP Mode

Aktivitas	Diperlukan Tindakan
Untuk mengatur ulang strip LED ke default pengaturan	Tekan dan Tahan tombol dari Smart Controller
Untuk beralih antara Tambah Otomatis/Mode EZ dan Mode AP konfigurasi	

3 Instalasi

A. Persiapan

1. Tempatkan strip LED dan Telepon dalam jarak tiga kaki router.

Catatan:

- Pastikan ponsel terhubung ke router melalui 2.4GHz jaringan nirkabel.
- Smart LED strip hanya beroperasi saat terhubung ke nirkabel 2.4GHz jaringan (hanya mendukung WPA atau WPA2).

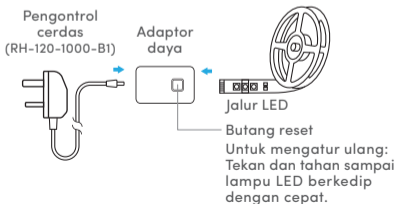
3 Instalasi

2. Unduh, instal, dan buat akun melalui aplikasi Prolink mEzee. Anda dapat memindai kode QR di bawah ini untuk mengunduh dari Google Store atau Apple App Store. Atau, cari "mEzee".



B. Menyiapkan strip LED

1. Hubungkan Smart Controller dengan adaptor USB dan strip LED seperti yang ditunjukkan di bawah ini. Pastikan lampu LED menyala dengan cepat mode berkedip setelah menyalakan daya. Mohon kekuatan On/Off 3 kali jika lampu LED tidak dalam mode kedip cepat setelah dihidupkan.

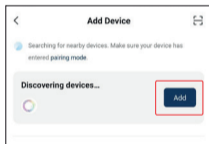


3 Instalasi

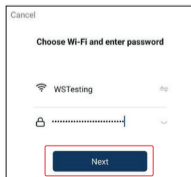
2. Luncurkan aplikasi mEzee dan masuk dengan akun Anda.
3. Ketuk **Add Device** atau + di pojok kanan atas.
4. Gunakan **Metode A** untuk mengonfigurasi menggunakan Bluetooth. Jika tidak, silakan gunakan **Metode B**.

Metode A: Tambahkan Konfigurasi Otomatis

1. Setelah mengetuk **Add Device** atau + dari layar utama, itu aplikasi akan mulai menemukan perangkat.
2. Ketuk **Add**.

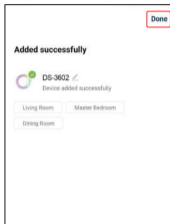
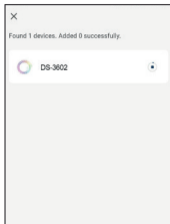


3. Pilih **Wi-Fi name**, masukkan **Wi-Fi password**, dan ketuk **Next**.



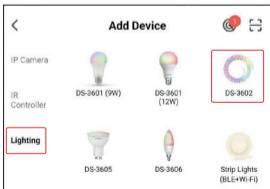
3 Instalasi

4. Setelah terhubung, lanjutkan memberi nama perangkat ini agar mudah referensi dan ketuk **Done**.



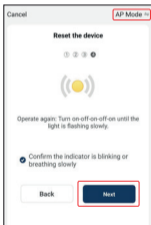
Metode B: Konfigurasi Mode AP

1. Pilih **Lighting** dan ketuk **DS-3602**.



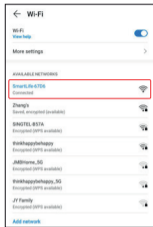
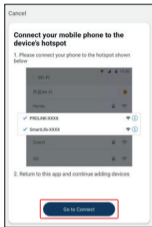
3 Instalasi

- Alihkan opsi kanan atas ke **AP Mode** jika ditampilkan jika tidak.
- Pastikan strip LED berkedip perlahan. Jika tidak, tekan dan tahan tombol pada Smart Controller sampai strip LED mulai berkedip perlahan. Atau, Power Hidup dan Mati selama 3 kali berturut-turut.
- Centang kotak "**Confirm the indicator is blinking or breathing slowly**", dan ketuk **Next**.
- Pilih nama **Wi-Fi name**, masukkan the **Wi-Fi password** dan ketuk **Next**.

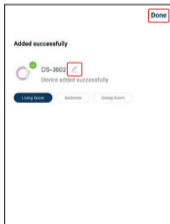
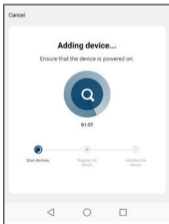


- Ketuk **Go to Connect** dan sambungkan ponsel Anda ke PROLiNK-XXXX atau SmartLife-XXXX SSID. Jika Anda mendapatkan diminta dengan "**SSID doesn't have Internet access**", ketuk **Connect** dan kembali ke Aplikasi.

3 Instalasi



7. Setelah terhubung, lanjutkan untuk mengganti nama perangkat ini agar mudah referensi dan ketuk **Done**.



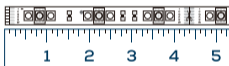
3 Instalasi

Catatan:

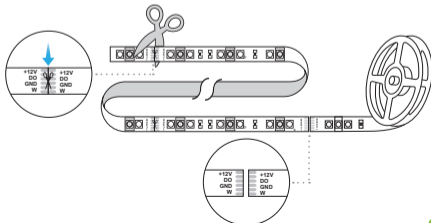
- Harap tentukan panjang strip LED sebelum mengontrol fitur di aplikasi mEzee, jika tidak, Anda mungkin tidak bisa mendapatkannya fitur yang diinginkan.
- Pastikan strip LED berfungsi dengan baik sebelum pemasangan. Silakan hubungi toko tempat Anda membeli jika ada masalah apapun.

C. Pemasangan strip LED

- Ukur area yang ingin Anda pasang strip LED. Memastikan bahwa area tersebut memiliki permukaan yang bersih dan padat.



- Gunakan gunting atau pisau tajam untuk memotong. Strip LED dapat dipotong setiap 10cm (jika perlu).



3 Instalasi

3. Kupas perlahan lapisan perekat di bagian belakang strip LED.



4. Posisikan strip LED dan tekan dengan kuat setidaknya selama 30 detik untuk memastikan pegangan yang kuat.

Catatan:

Anda tidak akan dapat menyambungkan strip LED ke Smart Controller jika Anda mengukur & memotong dari ujung yang salah.

Untuk pengguna Google Assistant / Amazon Alexa:

- Langkah 1. Selesaikan langkah-langkah dalam Panduan Instalasi Cepat ini
- Langkah 2. Panduan pengaturan untuk Google Home dan Amazon Alexa adalah tersedia di <https://prolink2u.com/products/ds-3602>, di bawah tab unduhan.



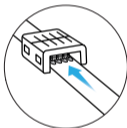
3 Instalasi

Cara memperpanjang panjang strip lampu (hingga 10m)

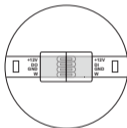
- i) Menggunakan pisau kecil atau pisau, potong plastik pelindung lapisan di sekitar tepi ujung strip.
- ii) Geser ujung yang dipangkas ke dalam konektor extender kompartemen. Ikuti bibir lampiran untuk memastikan bahwa lampu strip terhubung ke konduktor 4 cabang dengan benar.
- iii) Ulangi langkah di atas untuk ujung strip cahaya lainnya dan tutup konektor.



1. Buka LED konektor strip dan hapus sekitar 1 cm PU pelapisan dengan pisau atau pisau kecil

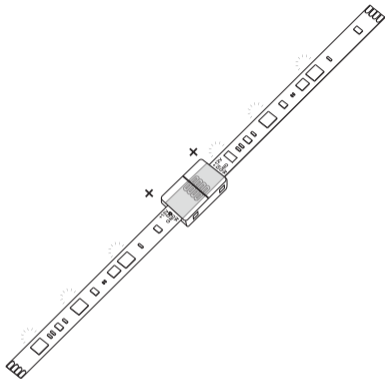


2. Masukkan strip di bawah tab logam



3. Pastikan keduanya Strip LED adalah selaras

3 Instalasi



Catatan:

Jika strip LED tidak berfungsi, pastikan konduktor 4 cabang terhubung dengan benar dengan area tembaga strip LED.

4 **Pertanyaan Yang Sering Diajukan**

Bagaimana cara berbagi akses strip LED dengan keluarga dan teman?

Berbagi akses strip LED dengan keluarga dan teman dapat dilakukan menggunakan aplikasi mEzee. Ketuk tombol “...” yang ada di bagian atas kanan untuk pengaturan lanjutan, dan ketuk tombol “Share Device” diikuti dengan tombol “Add Sharing” untuk memberikan atau mencabut berbagi izin.

Perhatikan bahwa semua pengguna harus memiliki akun terdaftar aplikasi mEzee untuk mendapatkan akses ke strip LED.

Berapa banyak strip LED yang dapat saya kendalikan?

Aplikasi mEzee dapat mengontrol hingga 200 rumah pintar perangkat termasuk kamera untuk beberapa lokasi. Namun, router Anda mungkin memiliki batasan jumlah perangkat terhubung dengannya.

Bagaimana cara mengganti nama strip LED?

Pada daftar perangkat utama di aplikasi mEzee, ketuk strip LED Anda ingin mengganti nama dan tombol “...” ditemukan di kanan atas untuk pengaturan lanjutan, dan ketuk “DS-3602” yang ditemukan di atas sunting.

Apa yang harus saya lakukan ketika strip LED saya terlihat offline atau tanpa diketahui?

Pastikan router Wi-Fi Anda berfungsi dan pindahkan LED Anda strip lebih dekat ke itu. Selanjutnya, periksa apakah Anda memilikinya versi firmware terbaru dengan mengklik “Check for firmware update” di pengaturan perangkat Anda menggunakan aplikasi mEzee.

4 **Pertanyaan Yang Sering Diajukan**

Apa yang harus saya lakukan jika saya tidak dapat menghubungkan strip LED saya karena ke lokasi router saya?

Anda dapat mempertimbangkan untuk menambahkan ProLink Wi-fi Extender untuk meningkatkan dan memperluas jangkauan Wi-fi.

Bisakah saya menggunakan strip LED jika Wi-fi/internet saya mati?

Strip LED harus terhubung ke Internet rumah Anda jika Anda ingin menggunakannya dari jarak jauh.

Worldwide Customer Care Centers

INDONESIA Office

Diimport oleh

PT PROLINK INTIDATA NUSANTARA

Walk-In : Jl. Cideng Barat No. 79, Jakarta Pusat 10150, Indonesia.

Telephone : +62 21 3483 1777

Sale Enquiries : sales.id@prolink2u.com

Technical Support: support.id@prolink2u.com

MALAYSIA Office

FIDA SYSTEMS (M) SDN BHD

Walk-In : 29 Jalan USJ 1/31, 47600 Subang Jaya, Selangor Darul Ehsan, Malaysia.

Telephone : +60 3 8024 9151

Sale Enquiries : sales.my@prolink2u.com

Technical Support: support.my@prolink2u.com

SINGAPORE Office

FIDA INTERNATIONAL (S) PTE LTD

Walk-In : Block 16 Kallang Place #06-02, Kallang Basin Industrial Estate, Singapore 339156.

Telephone : +65 6357 0668

Sale Enquiries : sales@prolink2u.com

Technical Support: support@prolink2u.com

Technical Support Hotline

INDONESIA : +62 21 3483 1717

MALAYSIA : +60 3 8023 9151

SINGAPORE : +65 6357 0666

Note: Closed on Saturdays, Sundays and local/regional Public Holidays.

Register online for your Product Warranty at www.prolink2u.com

Prolink is a registered trademark of Fida International (S) Pte Ltd. Other brands and product names are trademarks or registered trademarks of their respective holders. Product images are purely for illustrative purposes and may differ from the actual product. Specifications are subjected to changes without prior notice. Copyright © 2023 Fida International (S) Pte Ltd.